



# Noticias de ISLA



ISLA

Volume Four

Issue 1

septiembre 2010

Dear ISLA families,

As I walked through the halls today, I noticed how quiet things were. Quiet is not something I usually associate with the first week of school. I have to admit that last spring I was a little nervous about adding fifty students to the mix in this building. I imagined the halls very crowded and chaotic. I have been pleasantly surprised at how well the traffic patterns work. We still have a few typical first week kinks to work out, but overall routines are being established and we are on-schedule for a great year!

This month's newsletter contains a few items that may be of special interest to you. Parents, teachers and Board members worked over the last school year to complete a *Code of Conduct*, *Discipline Policy* and *Visitor Policy*. Those documents are included in today's mailing. Please sign and return the blue form found in the Thursday envelope indicating you and your child have reviewed the *Code of Conduct* and understand its contents. When students, families and school personnel are all on the same page with expectations, we have fewer behavior issues at school. We all appreciate your support in this matter!

Please join me in congratulating Leslee Tejada, PTO Volunteer Coordinator and ISLA parent. She was recognized in *PTO Today* for her contributions to ISLA. The article is included in this newsletter. Thank, you, Leslee for your hard work to make ISLA a great place to be!

Here's to a great 2010-11! I look forward to seeing you all on Curriculum Night on September 16.

Sincerely,

Karen Terhaar

## ISLA Directory

Phone: (952) 746-6020

Fax: (952) 746-6023

Karen Terhaar, Director	Ext. 202	<a href="mailto:kterhaar@islacad.org">kterhaar@islacad.org</a>
Ximena Rayo, Asst. Director	Ext. 211	<a href="mailto:xrayo@islacad.org">xrayo@islacad.org</a>
Karen Speich, Program Asst.	Ext. 204	<a href="mailto:kspeich@islacad.org">kspeich@islacad.org</a>
Emily Smith, Office	Ext. 201	<a href="mailto:esmith@islacad.org">esmith@islacad.org</a>
Jen Jouppi, Bookkeeper	Ext. 212	<a href="mailto:jjouppi@islacad.org">jjouppi@islacad.org</a>
Pam Shrestha, Kinder	Ext. 208	<a href="mailto:pshrestha@islacad.org">pshrestha@islacad.org</a>
Paola Patiño-Johnson, Kinder	Ext. 218	<a href="mailto:ppatino-johnson@islacad.org">ppatino-johnson@islacad.org</a>
Vanessa Bera, 1 <sup>st</sup> grade	Ext. 215	<a href="mailto:vbera@islacad.org">vbera@islacad.org</a>
Dayra de la Cruz, 1 <sup>st</sup> grade	Ext. 213	<a href="mailto:ddelacruz@islacad.org">ddelacruz@islacad.org</a>
Emily Helgerson, 2 <sup>nd</sup> grade	Ext. 207	<a href="mailto:sbaksic@islacad.org">sbaksic@islacad.org</a>
Oscar Franco, 2 <sup>nd</sup> grade	Ext. 205	<a href="mailto:ofranco@islacad.org">ofranco@islacad.org</a>
Cori Adams, 3 <sup>rd</sup> grade	Ext. 209	<a href="mailto:cadams@islacad.org">cadams@islacad.org</a>
Briana Boeser, 4 <sup>th</sup> grade	Ext. 214	<a href="mailto:bboeser@islacad.org">bboeser@islacad.org</a>
Amanda Lea, 5 <sup>th</sup> /6 <sup>th</sup> grade	Ext. 210	<a href="mailto:alea@islacad.org">alea@islacad.org</a>
Brenna Backstrand, LA – 6th	Ext. 217	<a href="mailto:bbackstrand@islacad.org">bbackstrand@islacad.org</a>
Angie Tix, Math – 6 <sup>th</sup> grade	Ext. 217	<a href="mailto:atix@islacad.org">atix@islacad.org</a>
Judy Rupert, Special Ed.	Ext. 206	<a href="mailto:jrupert@islacad.org">jrupert@islacad.org</a>
Jorge Gonzalez, Music & Art	Ext. 216	<a href="mailto:jgonzalez@islacad.org">jgonzalez@islacad.org</a>
Juan Carlos Ruiz, PE		<a href="mailto:jcrui@islacad.org">jcrui@islacad.org</a>
Mary Rehaume, Band		<a href="mailto:mrehaume@islacad.org">mrehaume@islacad.org</a>
Compañeros by Mis Amigos		(952) 935-5588
		<a href="mailto:info@misamigospreschool.com">info@misamigospreschool.com</a>

## Fall 2010 PTO dates to remember

- **Friday, September 10th, Back-to-Football Friday**
- **Monday, September 13th, Chipotle in Hopkins. Bring in flyer and ISLA receives 50% of the proceeds.**
- **Weekend of September 17 - 19, 2010: Cub Foods hot dog stand on Hwy 7 Cub in SLP**
- **Friday, October 15, 2010: Fuddruckers Fund Raiser at Fuddruckers in SLP**

Dear ISLA parents!



I am Sr. Ruiz the Physical Education teacher. I'm from Bogota, Colombia, city where I got my degree 3 years ago. I have been teaching at ISLA for 2 years, the first one as a Exchange Student sharing my culture and language and the second year as a Physical Education teacher half time and Educational Assistant the rest of the time.

It is my mission to help students be successful and cooperative learners. I believe in creating a safe and positive learning environment using our IB attitudes and learner profile attributes for the students we teach.

Safe participation in all activities is important to me. Students need to wear appropriate shoes. Athletic or "tennis shoes" or any flat shoe with a rubber sole will be required and will allow students to be able to move safely on the gym floor. Boots, sandals, or dress shoes are not safe for the activities. I need your help in this matter so that students can be a part of the class every day. Make sure your child has an extra pair of shoes in their class if they will not be wearing tennis shoes to school.

During the first 6 weeks, we will be learning typical games from South America in Spanish, social skills and locomotor skills. Through that process, we will have involved students in activities and games which will be fun and meaningful for each grade level.

Future units of study will be as follows: Bowling, basketball, soccer, football, floor hockey, kickball. We will end the school year with an IB field day, full of activities and fun games here at ISLA.

You are welcome to visit the class and watch your child participating in the activities. I look forward to a productive and successful year. If you want to contact me for any questions or concerns, please e-mail me at [jcruiz@islacad.org](mailto:jcruiz@islacad.org).

Gracias!



Here's what we're up to for the next several months in music class!



In Kinder, students will:

- Play percussion instruments and learn how to play together as a group.
- Play rhythmic patterns.
- Sing expressively with varying dynamics.
- Make drawings related to a song while they are listening to it, which is called rhythmic drawing.
- Improvise appropriate sound effects to stories and poetry.



In First Grade students will:

- Sing and play with varying dynamics and tempo.
- Read and notate melodies using *mi* and *sol*.
- Identify call-and-response form.
- Identify rhythm patterns.
- Improvise melodies using *mi* and *sol*.

In Second Grade will:

- Sing song alone and with others.
- Read and notate melodies using *mi*, *sol* and *la*.
- Improvise and compose melodies using *mi*, *sol* and *la*.
- Identify AB and ABA forms.
- Learn how to follow listening maps and identify their parts.
- Describe pitch, dynamics, tempo, duration and form

In Third Grade students will:



- Read, sing and play melodies *sol*, *la* and *do*?
- Improvise and compose melodies using *do*, *re*, *mi*, *sol*, *la* and *do*?
- Learn how to play songs with *si*, *la*, *sol* on the recorder.
- Learn to recognize when a song starts with a "pickup note."

### In Fourth Grade students will:



- Sing rounds
- Learn to respond musically to a conductor.
- Improvise and compose melodies using *do, re, mi, fa, sol, la, si* and *do*?
- Be able to identify instruments within orchestral families.
- Learn how to play songs with *sol, la, si, do* and *re* on the recorder.

### In Fifth and Sixth Grade students will:



- Sing rounds and songs for two voices.
- Play and recognize major and minor chords
- Learn to respond musically to a conductor.
- Be able to identify instruments within orchestral families.
- Learn how to play songs with *sol, la, si, do* and *re* on the recorder.



## Finding a Role for Every Parent

Leslee Tejada  
Board Member, International Spanish  
Language Academy PTO, Minnetonka, Minn.

Leslee Tejada is a firm believer in the theater adage “There are no small parts.” That philosophy is behind her success at involving parents at the K-8 International Spanish Language Academy, in Minnetonka, Minn. Whether parents are collecting box tops or combing a child’s hair on picture day, to Tejada, their supporting roles all play a major part in helping build a great school. And finding just the right role for everyone is a job Tejada has performed rather well as both volunteer coordinator and vice chair of community events and extracurriculars.

Tejada, who was widowed in 2007, has two children at ISLA, Fionna, 10, and Gianni, 8. As volunteer coordinator, she says she first gets to know each parent personally so she can identify that parent’s motivation and strengths. “The more I know the families, the easier it is to recognize who to call on,” Tejada explains. When the school needed more committee members for a facility search, for example, she called on the parents she knew in the real estate and architecture fields.

“I know which parents are available during the day,

which have younger siblings [of students], who is a photographer, painter, etc.,” she says. The result is a ready and capable network of parents to help with the school yearbook, a booth at the town fair, and even the year-end rummage sale.

Tejada has also planned several events to help families connect to the school. She initiated the school’s Dia de Los Muertos celebration in which families play *loteria* (a Mexican version of bingo) and make an *ofrenda* (“offering”) to loved ones who have passed away. In May, she coordinated a family event in which students showcased projects from the school’s grant-funded recycling program.

In recognition of those efforts, another board member nominated Tejada for a 2009 Minnesota Vikings Community Quarterback Award.

ISLA executive director Karen Terhaar describes Tejada as an advocate for families. “She has her behind-the-scenes role, but she attends every event and stays late to clean up consistently,” Terhaar says. “She not only gets others to help out, she models by working so hard herself.”

That hard work is paying off; involvement in the PTO and ISLA’s fundraising efforts is thriving. Says Tejada, “I feel great about the community that has been built, and it is getting bigger.”



## Calendar of Events



Sept. 6	Labor Day, <b>No School</b>
Sept. 10	Back to Football Friday, 6-8:30 pm
Sept. 10	Scholastic Book Fair, 3-8:30 pm
Sept. 13	Hopkins Chipotle Fundraiser
Sept. 14	ISLA Board meeting, 6:30 pm
Sept. 16	Curriculum Night, 6:30 pm
Sept. 17-19	Knollwood Cub Foods Fundraiser
Sept. 21	Late start - 2 hours late. PM kinder attends at normal time.
Sept. 21	4-H meeting, 7 pm
Sept. 21	McDonald’s Night, 4-7 pm
Sept. 24	Roller Garden Fun Night, 4:30-7 pm
Sept. 28	PTO meeting, 7 pm
Oct. 5	Picture day
Oct. 15	SLP Fuddrucker’s Fundraiser, 11 – 10

## Cub Foods/PTO Fundraiser

The ISLA PTO will be running the Cub Foods Lunch Truck on September 17th, 18th and 19th. They are hoping to raise \$1,000 with this simple fundraiser, and promote ISLA at the same time!

They will need 2-4 adults for each shift (10:30-1, 1-3:30 and 3:30-5:45) to cook & serve hot dogs, hamburgers & brats, and sell chips & pop. While children are welcome to volunteer, it does get very busy. Please be sure your children are at an appropriate maturity level to help.

Please look for an e-mail shortly asking for your help.



Summer went by fast for all us. We spent much of it preparing for this week. We are excited to be back at school and see so many smiling faces coming to meet our teachers.

## Welcome to new ISLA staff members!

There are a few new faces around ISLA this year. Due to the unusual size of our sixth grade class we have a half-day configuration for this year that involves two English teachers. Angie Tix taught the sixth graders math for a portion of the year last year and is back this year to teach math. Brenna Backstrand, an elementary teacher with a specialty in literacy will teach the sixth graders language arts. Paola Patiño-Johnson is the new half-day kindergarten teacher. Sra. Patiño-Johnson (Sra. Patiño to the students) taught as a substitute last year in an immersion school in the St. Cloud district, and has worked in a head-start program. She is a native of Colombia. Sonia Beccaria is working as an Education Assistant. She comes to us from Argentina and has worked as a science teacher in her home country. Rita Miller is working with Mis Amigos in our school care program, Compañeros. She will be here early mornings and with the half-day kindergarteners for the kinder portion of school care. Sra. Miller, a teacher for many years in Iowa, is originally from Ecuador.

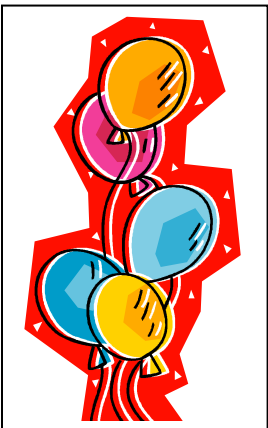
We are fortunate to have such experienced new staff this year. We look forward to a great 2010-11!

## Great News for ISLA!

Just today, ISLA was informed that our application for a Magnet Schools Grant in the amount of \$100,000 has been approved! There are many things we will be able to do with these

funds, including targeted staff development, literacy training, curriculum development and the purchase of books, materials and technology.

ISLA is a growing school with many needs. This grant will enable us to realize a number of goals that we have for our school.



I would like to take this opportunity to communicate a couple of areas that need our attention right away.

**Recess/Lunch** – We have started having recess before lunch this year. Students have been reviewing procedures during lunch and recess in their classroom and during a 1<sup>st</sup> through 6 grade assembly on Tuesday. Due to the increase in our numbers in the cafeteria, we have made a change to the lunch schedule, which will begin on Tuesday September 7. For your information the following is the Recess and lunch Schedule.

Class	Recess Time	Lunch Time
All-Day Kinder, Compañeros, 1 <sup>st</sup> & 3 <sup>rd</sup> Grade	11:30 – 11:50	11:55 – 12:15
2 <sup>nd</sup> , 4 <sup>th</sup> and 6 <sup>th</sup> Grade	12:00 – 12:20	12:25 – 12:45

**Bus** – Transportation is one of our biggest challenges every September. We need your support by helping your child/ren learn their bus number and have your students continue to wear their bus tag. Sra. Terhaar and I have been going to Eisenhower Elementary this week to help students in the bus transition. We are also having older students paired up with our Kindergarteners and First graders to alleviate any concern and start feeling comfortable changing buses. Supervisors at Eisenhower have been very helpful and cordial to our students. We will continue to work together with students so that it becomes a routine and everybody knows exactly what they need to do.

**MCA results**- We will be sending individualized MCA results by next week. Our overall scores for last spring were very good. 92% of ISLA students met or exceeded standards in Math and 90% met or exceeded in Reading. Teachers who have students who did not show mastery in Math or/and Reading will contact parents to determine an individualized learning plan to work on meeting standards next spring.

Sra. Ximena Rayo