



Noticias de ISLA

**International Spanish
Language Academy**

**Volume 3, Issue 10
April 29, 2010**

Dear ISLA families,

I've spent the last month visiting classrooms with this question in mind....What goes on at ISLA that does not happen in other schools? Because teachers cannot communicate everything they do in class on a daily basis in the weekly newsletter, I have a few observations to share with you.

I have heard the sweet voices of ISLA students singing a beautiful song arranged by Jorge Gonzalez, about the IB profile attributes. Every attribute is outlined, and a connection to ISLA is apparent. I see teachers using this language on a daily basis, when reminding students to quiet down, getting ready to go recess or lunch, and in the morning meeting. The attribute is integrated into the units of inquiry, and used to resolve conflicts. Teachers remind students of their positive attributes, encouraging appropriate behavior by saying things like "You are all good communicators, so I want you to share your idea with the person next to you.....You are all very caring children, so we are going to line up quietly now, respecting our classmates."

Recently I spoke with a child who had made a bad decision and ruined the property of another student. The teacher brought this student to me to process the incident. While working with the student to tell me what had happened, the teacher consistently focused on the behavior, not the child, and when speaking of the child, affirmed her by recognizing she was honest in admitting her mistake, that she had come to the teacher on her own, and outlined a few different IB attributes when encouraging the child to rectify the situation through restitution.

Inquiry is another unique aspect of daily presentation of content in the classroom. I was in a classroom where students were gathered around a tub of insects, observing and commenting on what they saw, and why the behavior of the insects was the way it was. Every child was engaged, and asking questions while hypothesizing. The presentation made the lesson ripe for thought and reflection.

Another important aspect of the International Baccalaureate Primary Years Programme is that students take action after learning information. Recently a parent shared some observations from home with the classroom teacher. With permission from the parent, I share this with you:

"You asked for feedback on some of the recent units. Our daughter has really enjoyed all of them and these are the subjects that she brings up most often at the dinner table. She is much more attentive to her "healthy habits" and is eating more veggies now. Food is a huge issue in our household and we seem to be struggling less with healthy eating discussions now that someone other than Mom or Dad has explained why it is important to eat fruit, veggies and proteins. She has also started saying things like, "I need to get outdoors today and exercise." She has always incorporated exercise into her life, but now she recognizes the health benefit of it and the importance of daily exercise. The unit on the environment resulted in the addition of a compost bin to our backyard. Our daughter volunteered to be the one to carry our veggie scraps out there each night and she also makes sure the bin has enough water, leaves, etc. We are looking forward to having some good soil to add to our garden. She and her friends also formed a little club during spring break and their mission is to protect the environment. They have their next meeting tomorrow as a matter of fact. Membership is open to anyone who cares about the environment, so they may have added new members by now too."

We have made steady progress toward becoming an IB World School over the last three years. I am eager to see the progress to come in the next three years!

Sincerely,

Karen Terhaar

ISLA Directory

**Phone: (952) 746-6020
Fax: (952) 746-6023**

Karen Terhaar, Director ext. 202
kterhaar@islacad.org

Ximena Rayo, Asst. Director ext 211
xrayo@islacad.org

Karen Speich, Program Asst. ext. 204
kspeich@islacad.org

Emily Smith, Office ext. 201
esmith@islacad.org

Jen Jouppi, Bookkeeper ext. 212
jjouppi@islacad.org

Amanda Lea, Kindergarten ext 207
alea@islacad.org

Pam Shrestha, Kindergarten ext. 210
pshrestha@islacad.org

Vanessa Bera, 1st Grade ext. 205
vbera@islacad.org

Dayra de la Cruz, 1st Grade ext 213
ddelacruz@islacad.org

Emily Helgerson, 2nd Grade ext. 209
ehelgerson@islacad.org

Cori Adams, 3rd Grade ext. 208
cadams@islacad.org

Briana Boeser, 4th Grade ext. 214
bboeser@islacad.org

Oscar Franco, 5th/6th Grade ext
206
ofranco@islacad.org

Judy Rupert, Special Ed. ext. 204
jrupert@islacad.org

Jorge Gonzalez, Music and Art
jgonzalez@islacad.org

Juan Carlos Ruiz, P.E.
jcruiz@islacad.org

Mary Rehaume, Band
mrehaume@islacad.org

Compañeros by Mis Amigos,
ext. 311 or (952) 935-5588
info@misamigospreschool.com

**International Spanish
Language Academy
12007 Excelsior Blvd.
Minnetonka, MN 55343**

LUNCH NEWS

ISLA will not be serving hot lunch on Friday, April 30th due to a Salad Luncheon being held at the church. Please remember to pack your student a bag lunch on this day.

The May Menu is going home on April 29th. Please complete your lunch choice form and return it to the office by April 30th in order for your student to have hot lunch on Monday, May 3rd. You may e-mail Jen at



jjouppi@islacad.org as well with your Monday hot lunch request.

We apologize for the tardiness in getting this menu to you.



Roller Gardens
5622 W. Lake St.
St. Louis Park, MN 55416
(952) 929-5518

Bike Rodeo

Hopkins and Minnetonka Police Departments will be hosting a Bike Rodeo on Saturday May 15th from 10am – 1pm at the Minnetonka Ice Arena B parking lot (14600 Minnetonka Blvd).

This family event is free and will offer helmet fittings, bike safety information, and refreshments. Kids will have the opportunity to test their safety skills as they navigate their bikes through an obstacle course (supervised by bike

patrol officers).

Bicycle helmets will be available for purchase.

Register online at www.eminnetonka.com (on the police page) or complete the registration form sent home from ISLA.

ISLA families will meet at 9:00 am at the Lunds parking lot (11400 Hwy. 7) on the 15th to ride over to the rodeo. Participants will ride on the northern branch of the southwest LRT



trail. Parents should accompany children on this ride. Remember to bring your water bottle and bike helmet.

Feel free to decorate your bike and wear your ISLA shirt!

If you have questions feel free to contact Nicole Nelson from Minnetonka Police Department. at (952) 939-8546 or Jon Wilson at jon.wilson@email.com.

Calendar of Events

May 8th
May 11th

May 11th
May 13th
May 18th
May 18th
May 21st
May 25th

May 25th
May 28th

May 31st
June 1st
June 4th
June 4th
June 4th
June 5th

Fiesta de la Primavera, 6:00 pm
5th/6th Grade Field Trip, Richfield Dual Immersion & RSI
ISLA Board Meeting and Elections, 6:30 pm
Spring Music Program, Grades 3-6 w/Band, 7:00 pm
McDonald's Night Fundraiser, 4-7 pm
4-H Meeting, 7 pm room 31
Spring Kinder Program, 2:30 pm
Late Start (2 hours late)
PM kinder attends at normal time
PTO meeting, 7 pm
4th Grade Field Trip, Mill City Musuem, James J. Hill House
Memorial Day, No School
Field Day
6th Grade Graduation
Last Day of School
Fuddrucker's Fundraiser
Roller Garden End of Year Party



Save The Date!

There will be an end-of-school party at the Roller Gardens on Saturday, June 5th.

This will be a private party, with just ISLA staff, students, family, and friends. Plan on skating to English and Spanish music and playing games!

Summer Camps

The summer is upon us and we are planning for a great summer of immersion in our six weeks of camp. We are excited with the themes picked for this year and as far as we know there is a lot interest not only here at ISLA but also in our neighboring immersion schools. We have started to receive registration forms from other districts. We need your help! It is difficult to plan for staffing and activities when we don't

know how many kids will be in a session. We don't want to have to cancel any of the camps but we need to have a closer count of the actual numbers of students we will have. Please turn in your registrations by Friday May 7th. to assure that your child gets their chosen camp.

Themes for 2010 Camps

Fun and Fitness
June 14-18

Celebrating ISLA...

We are celebrating ISLA every Friday in May while encouraging good behavior and habits these last five weeks of school. Teachers will inform you via the weekly newsletter of the special Friday dress days their students earn for Fridays beginning May 7.

Families will be given a week's notice, so any special clothes can be clean for that day. The first day to earn is a non-uniform day....followed by a selection determined by a class vote.

Spring Music Program for Grades 3-6

The Spring Music program for grades 3-6 will be held at 7:00 pm on Thursday, May 13th in the sanctuary of Faith Presbyterian Church. Our very own ISLA band will be performing as well.

Students should wear their se habla español t-shirts and dark pants—preferably black. Students should arrive at 6:30 pm to prepare for the program. They will meet their teachers in the music room.

Band students should ar-



Myths and Legends

June 21-25

Gettin' Dirty

June 28-July 2

Let's Build It

July 12-16

On the Wild Side

July 19-23

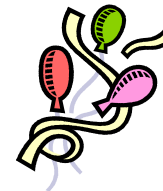
Camp ISLA's Got Talent

July 26-30

For more information and registration forms visit our website:

<http://www.islacad.org/newsevents/>

Also know that students may wear non-uniform attire appropriate for Athletic Day, June 1, and the last day of school.



Board Member Contact Information

Sonia Miller-Van Oort,
Chair
smiller@islacad.org

Michael Valley, Treasurer
mvalley@islacad.org

Kate Shablott, Chair Elect
Facility Committee Chair
kshablott@islacad.org

Mark Mathison,
Governance Committee Chair
mmathison@islacad.org

Eric Peterson,
Communications/Marketing
Committee Chair
epeterson@islacad.org

Vanessa Bera
vbera@islacad.org

Briana Boeser
bboeser@islacad.org

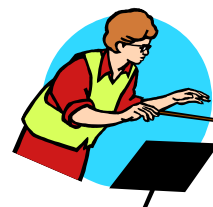
Melody Brombacher
mbrombacher@islacad.org

Kerry Krawczyk-LeMieux
klemieux@islacad.org

Steve Semler
ssemler@islacad.org

Spring Kinder Program

The spring kindergarten program will be held at ISLA at 2:30 pm on Friday, May 21st. More information will come home via your student's teacher.





International Spanish
Language Academy
12007 Excelsior Blvd.
Phone: 952-746-6020
Fax: 952-746-6023

*Nurturing Leaders for
Tomorrow's World*

**Annual Board of Directors
Meeting & Board Election**

On Tuesday, May 11th, 2010, at 6:30 p.m. in Room 122 of the ISLA site, the Board of Directors of ISLA will conduct its annual meeting and election of directors for seats on the ISLA Board of Directors. All parents of ISLA students, ISLA staff and teachers of ISLA are entitled to vote in this election. Voting is by secret ballot, and is conducted in person only, at the beginning of the annual meeting.

Cinco de Mayo Fiesta 2010

Friday, May 7 and Saturday, 8, 2010
District del Sol
St. Paul's West Side
www.districtdelsol.com
parade—authentic food—live music—dancing



Festival of Nations

Presented by the International Institute of Minnesota
The Festival of Nations is the largest and longest running multicultural festival in Minnesota, celebrating cultural diversity with food, music, demonstrations, exhibits and dance.
April 29—May 2, 2010
St. Paul RiverCentre
St. Paul, MN



**PLEASE JOIN US FOR
A FUNDRAISER AT
OUR**

**St. Louis Park FUDDRUCKERS
6445 Wayzata Blvd., St. Louis Park, MN**

International Spanish Language Academy

Date: June 4th

TOTAL BILL:

(Cashier will fill in amount)

**FUDDRUCKERS WILL DONATE BACK
20% OF ALL SALES BROUGHT IN BY
OUR ORGANIZATION!**

This is an all day event. Present this flyer to the cashier when placing your order, so that your organization may receive credit for your purchase. Flyers may not be passed out on Fuddruckers premises during your fundraiser. Thank you for your cooperation!

**Marimba 2010
International Festival**

April 28—May 1
Various locations, Minneapolis
www.marimba2010.org
The marimba, a percussion instrument often featured in traditional Latin American folk music, takes center stage for a three-day festival that includes 21 recitals and many educational events. Select concerts feature music and performers from Costa Rica, Guatemala, El Salvador, Mexico, Spain, Columbia, Venezuela, and Argentina. Concert times, locations and ticket prices may vary.



**¡Carnaval Exhibit!
Minneapolis Central Library
April 6—May 25th**

This exhibit features people from eight European and Latin American communities that work on this annual, community-wide festival. Included are images, video, masks, costume pieces that reflect their history and cultural traditions. A self-explanatory guide is available for families to fully experience the exhibit.

This program is funded in part with money from the vote of the people of Minnesota on Nov. 4, 2008, which dedicated funding to preserve Minnesota's art and cultural heritage.

Presented in partnership with the National Endowment for the Humanities.